



Court Statistics under the
New Bankruptcy Law
Jan 2003- March 2005

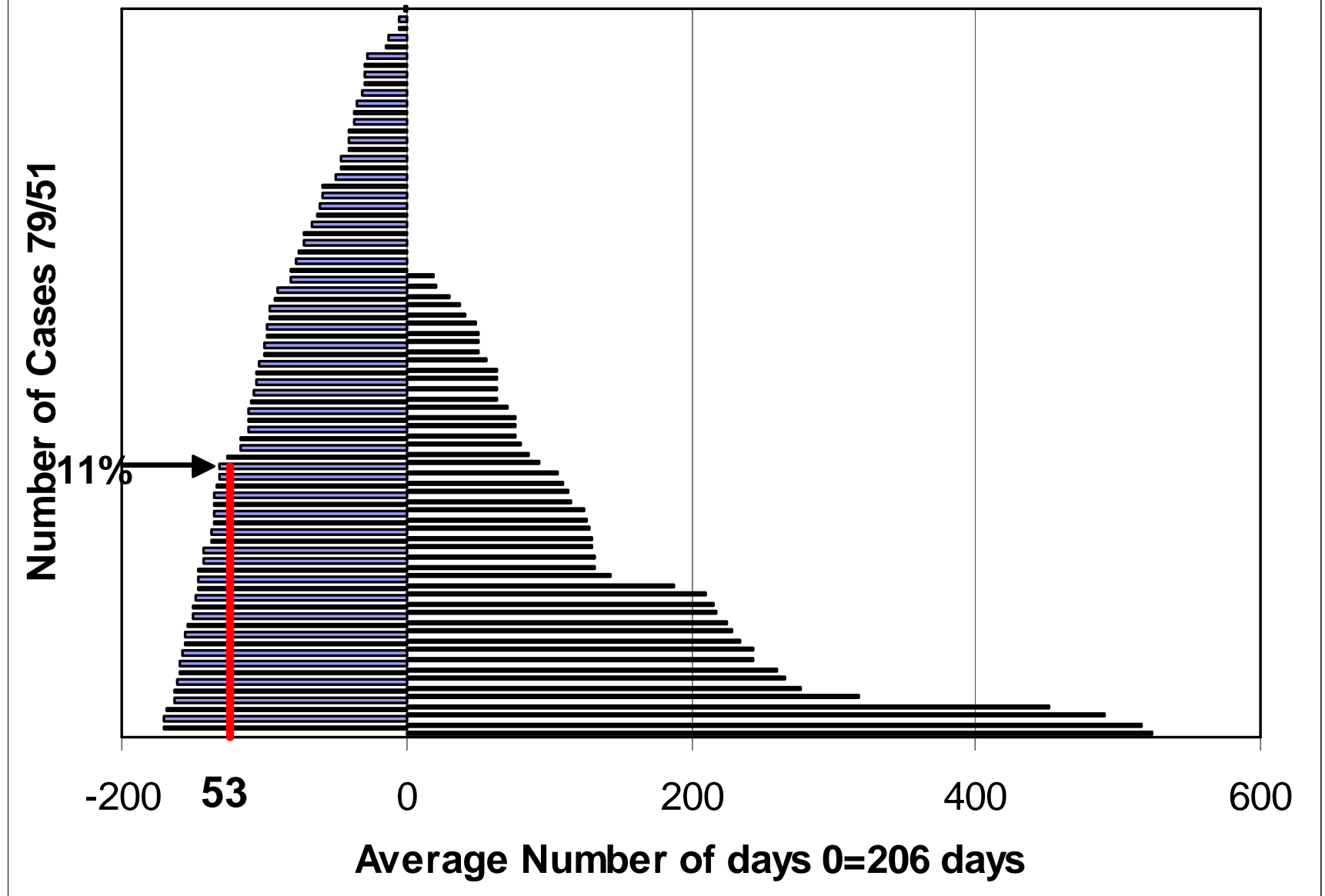
Bankruptcy Proceeding in BIH

Duration in Days per Phase

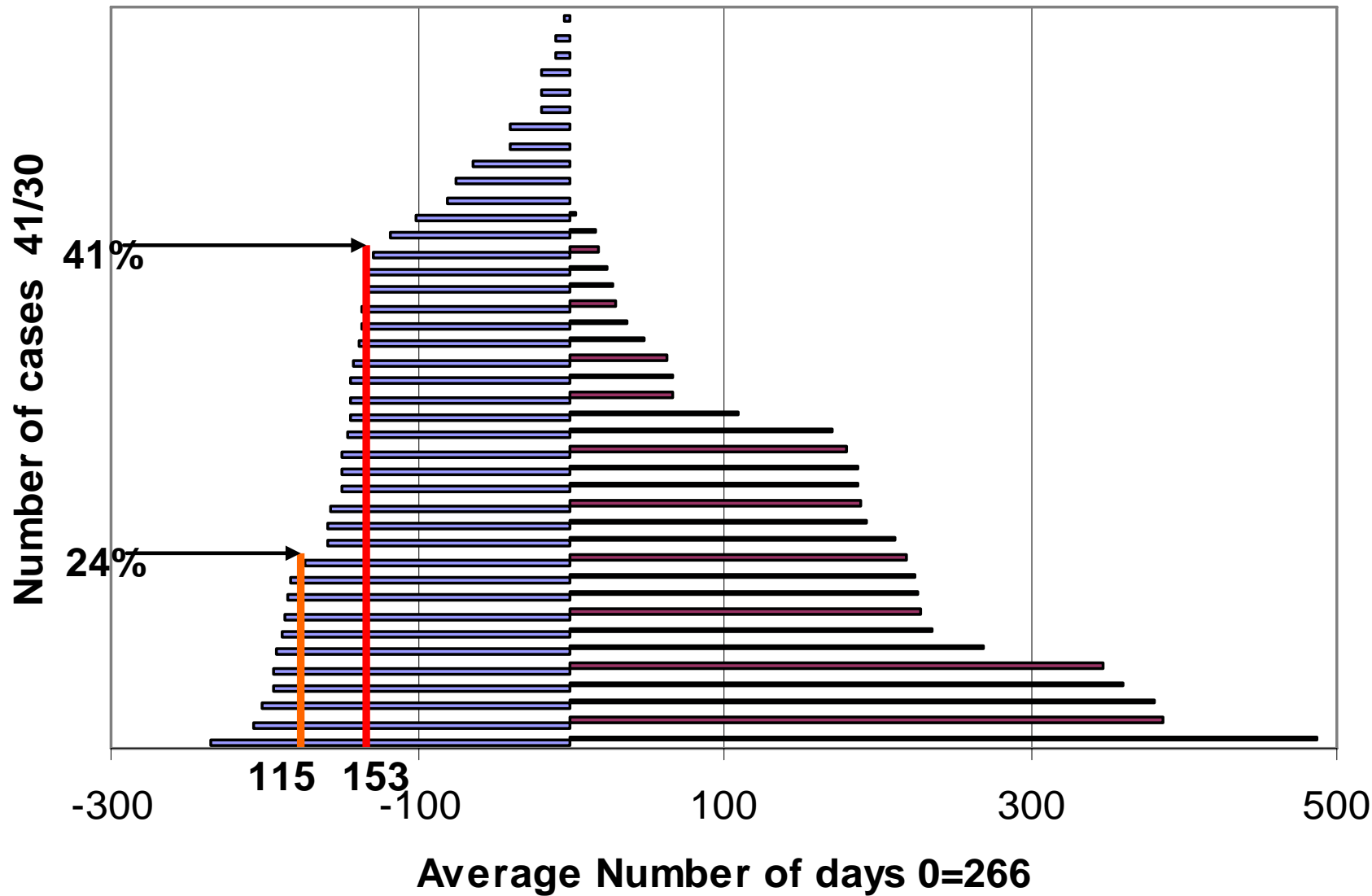
Jan 2003 – March 2005

| | PHASE I | PHASE II | PHASE III |
|---------------------|----------------|-----------------|------------------|
| Arithmetic | 206 | 266 | 273 |
| Median | 166 | 247 | 246 |
| Mode | 270 | 247 | |
| St.Deviation | 152 | 178 | 155 |
| CV – coeff. | 0.741 | 0.668 | 0.569 |
| Max | 730 | 753 | 522 |
| Min | 5 | 31 | 102 |
| Count | 130 | 71 | 6 |

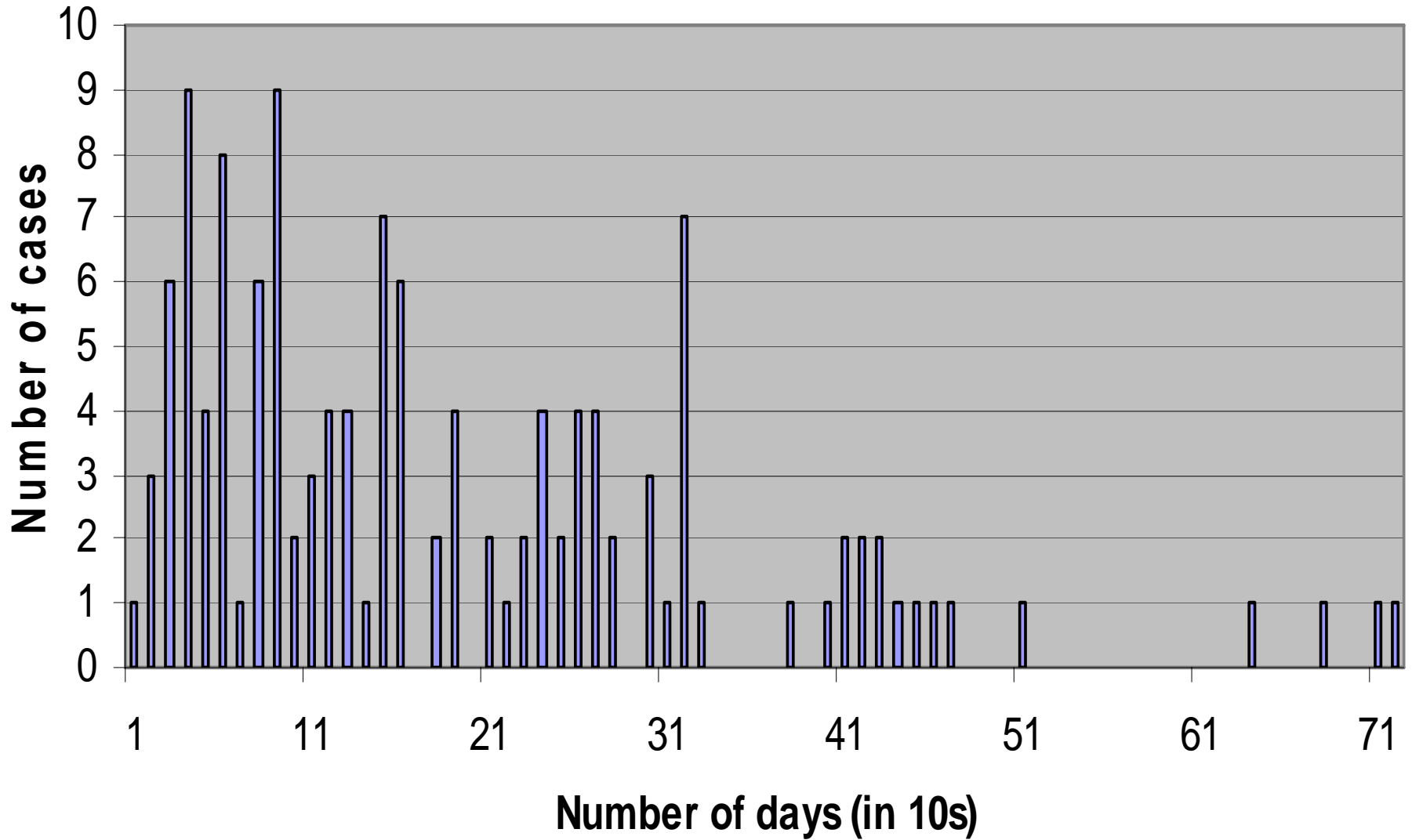
Distribution of Average Duration of cases at Phase I



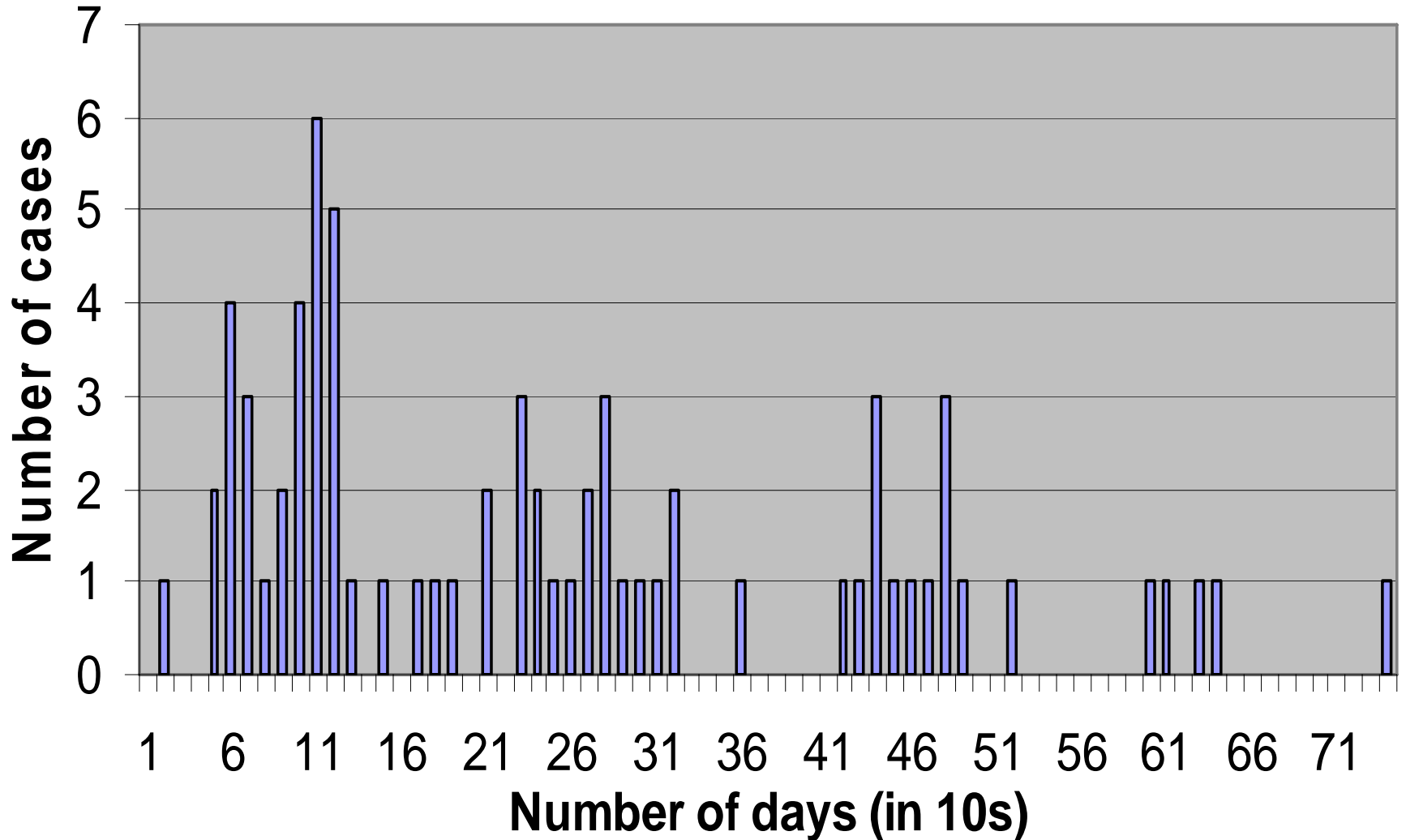
Distribution of Average Duration of cases at Phase II



Distribution of cases in Preliminary Hearing



Distribution of cases in Investigation and Reporting Hearings



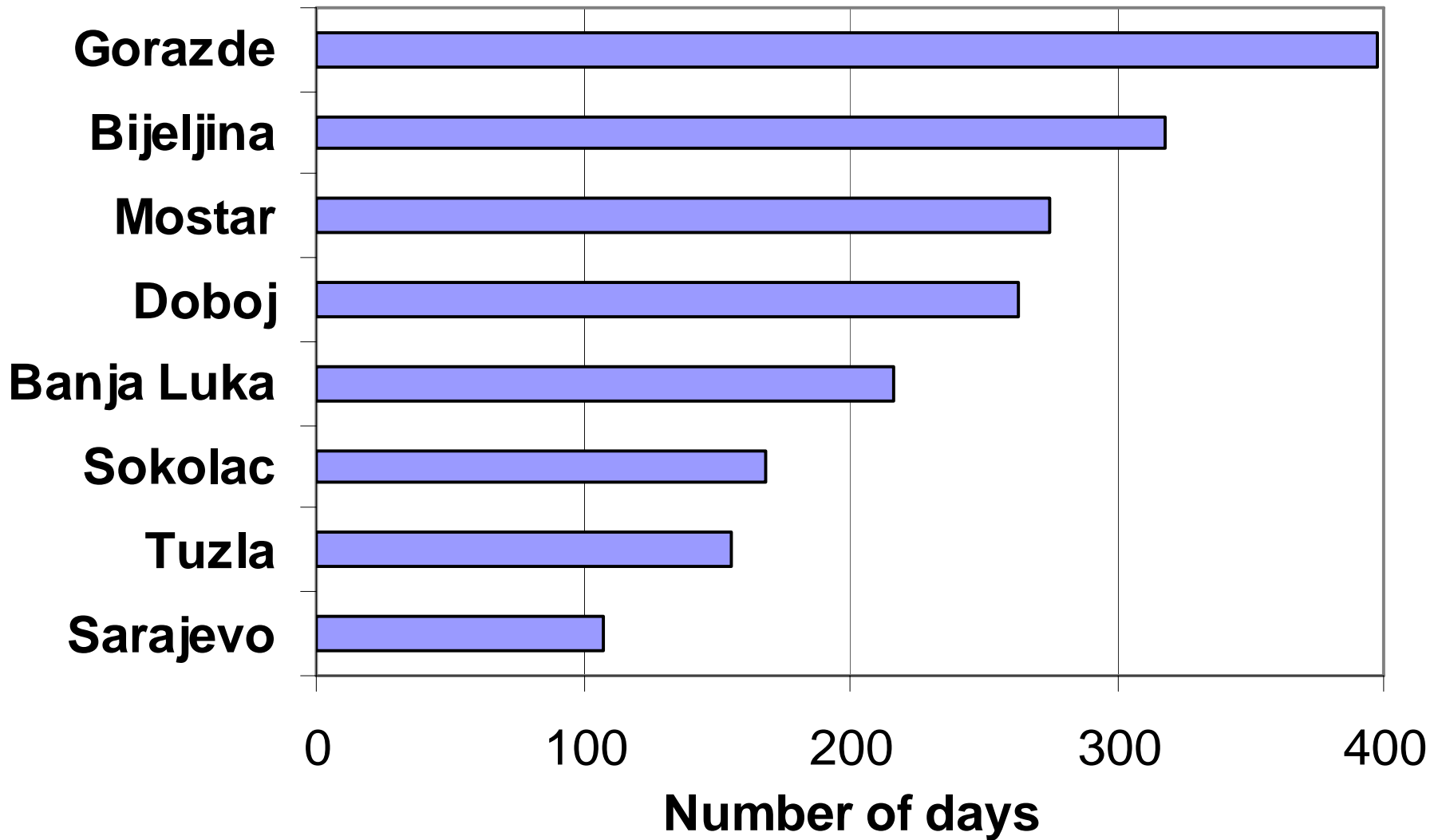
Bankruptcy Proceeding in BIH

Duration in Days per Phase I

Jan 2003 – March 2005

| PHASE I | Arithmetic | Median | Mode | St.Dev. | CV | Max | Min | Cases |
|-------------------|-------------------|---------------|-------------|----------------|--------------|------------|------------|--------------|
| Sarajevo | 107 | 73 | | 84 | 0.787 | 349 | 5 | 15 |
| Tuzla | 156 | 147 | 59 | 83 | 0.536 | 331 | 49 | 21 |
| Sokolac | 169 | 151 | 94 | 102 | 0.608 | 334 | 46 | 14 |
| Banja Luka | 216 | 177 | 270 | 145 | 0.669 | 523 | 35 | 44 |
| Doboj | 264 | 160 | | 230 | 0.874 | 730 | 64 | 13 |
| Mostar | 275 | 282 | | 148 | 0.539 | 440 | 59 | 7 |
| Bijeljina | 318 | 318 | | 165 | 0.520 | 435 | 201 | 2 |
| Gorazde | 398 | 431 | | 277 | 0.696 | 657 | 106 | 3 |

Average number of days for Phase I



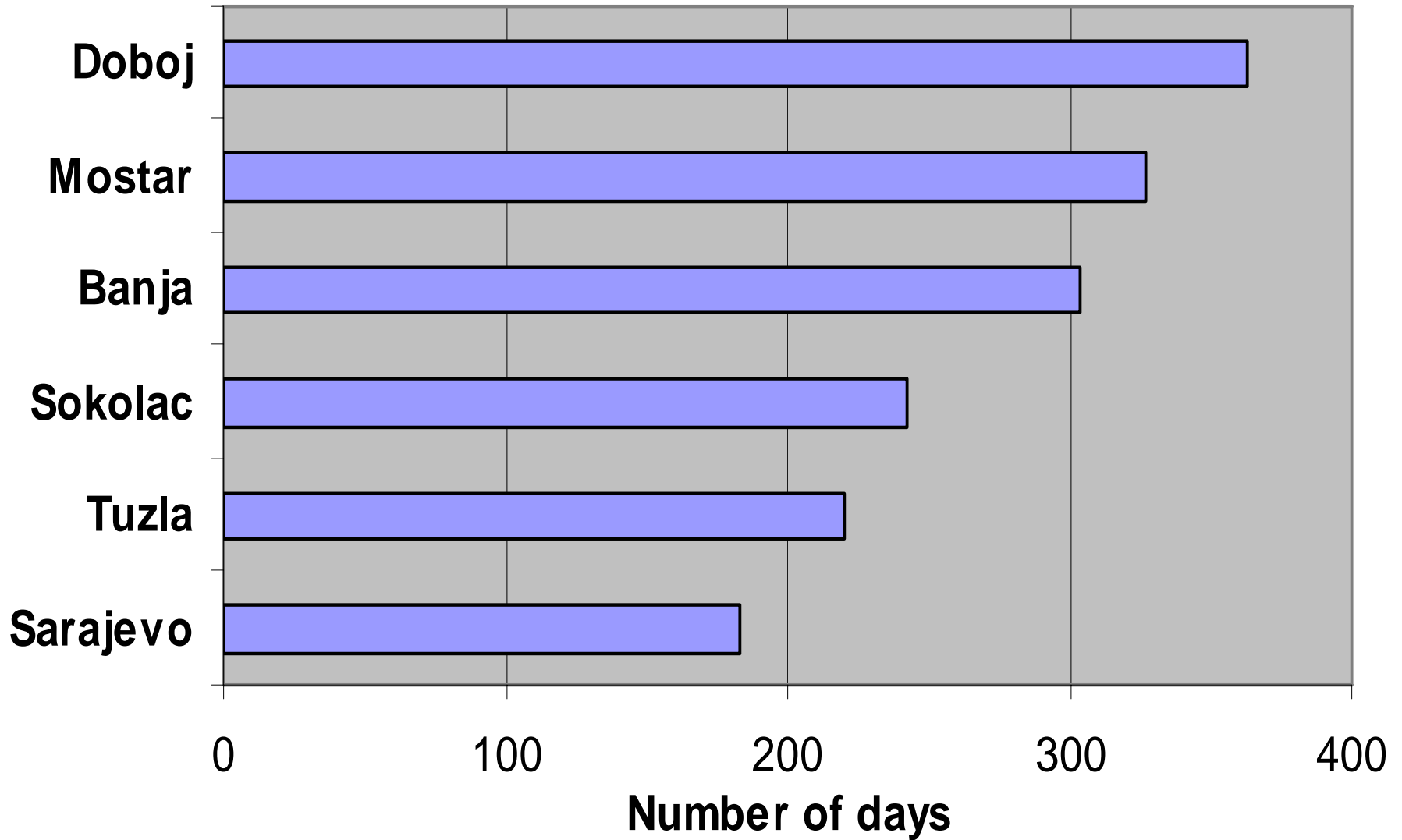
Bankruptcy Proceeding in BIH

Average Duration in Days of Phase II

Jan 2003 – March 2005

| PHASE II | Arithmetic | Median | Mode | St.Dev. | CV | Max | Min | Cases |
|-----------------|-------------------|---------------|-------------|----------------|--------------|------------|------------|--------------|
| Sarajevo | 183 | 158 | 72 | 95 | 0.516 | 332 | 59 | 14 |
| Tuzla | 220 | 162 | 107 | 158 | 0.720 | 502 | 31 | 14 |
| Sokolac | 242 | 247 | 247 | 122 | 0.502 | 492 | 124 | 7 |
| Banja | 304 | 260 | 123 | 207 | 0.683 | 753 | 64 | 22 |
| Mostar | 327 | 368 | | 162 | 0.494 | 456 | 117 | 4 |
| Doboj | 363 | 363 | | 402 | 1.110 | 647 | 78 | 2 |

Average Number of Days PHASE II



Bankruptcy Proceeding in BIH

Average Duration in Days of Phase III

Jan 2003 – March 2005

| PHASE III | Banja Luka | Tuzla |
|--------------|------------|-------|
| Arithmetic | 256 | 355 |
| Median | 179 | 355 |
| St.Deviation | 167 | 0 |
| CV | 0.654 | 0 |
| Max | 522 | 355 |
| Min | 102 | 355 |
| No.Cases | 5 | 1 |

